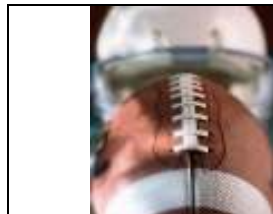


GATE	ROW	SEAT
A	1	1

Sports Empire™
 SPORTS & SPECIAL EVENT PACKAGES

BCS National Championship New Orleans, LA

Tuesday, January 8, 2007



- Three nights at Hampton Inn New Orleans-Convention Center
- End Zone game ticket
- Roundtrip Airport Transfer
- Breakfast each morning
- All state and local taxes

Price Per Person	Package Price	Extra Nights
Double Occupancy	\$1995	\$110
Single Occupancy	\$2495	\$220
Triple Occupancy	\$1895	\$ 75
Quad Occupancy	\$1795	\$ 60

HAMPTON INN NEW ORLEANS-CONVENTION CENTER

The hotel is located in the Arts and Warehouse district, eight blocks from the French Quarter and near the Superdome, Sports Arena, Harrah's Casino, Riverwalk and within walking distance to several of the finest restaurants in New Orleans. The hotel is approximately 1.5 miles from the Super Dome and 15 miles from New Orleans International Airport (MSY).

NATIONAL CHAMPIONSHIP UPGRADE PRICING:

Price Includes Terrace Level End Zone

TERRACE LEVEL CORNER
ADD \$500 PER PERSON

LOWER LEVEL END ZONE
ADD \$600 PER PERSON

TERRACE LEVEL END LINE - 25
ADD \$700 PER PERSON

LOWER LEVEL CORNER
ADD \$700 PER PERSON

LOGE LEVEL END ZONE
ADD \$700 PER PERSON

LOGE LEVEL CORNER
ADD \$800 PER PERSON

TERRACE LEVEL BETWEEN 25's
ADD \$850 PER PERSON

LOWER LEVEL ENDLINE - 25
ADD \$1100 PER PERSON

LOGE LEVEL ENDLINE - 25
ADD \$1500 PER PERSON

LOWER LEVEL BETWEEN 25's
ADD \$2000 PER PERSON

LOGE LEVEL BETWEEN 25's
ADD \$2500 PER PERSON

